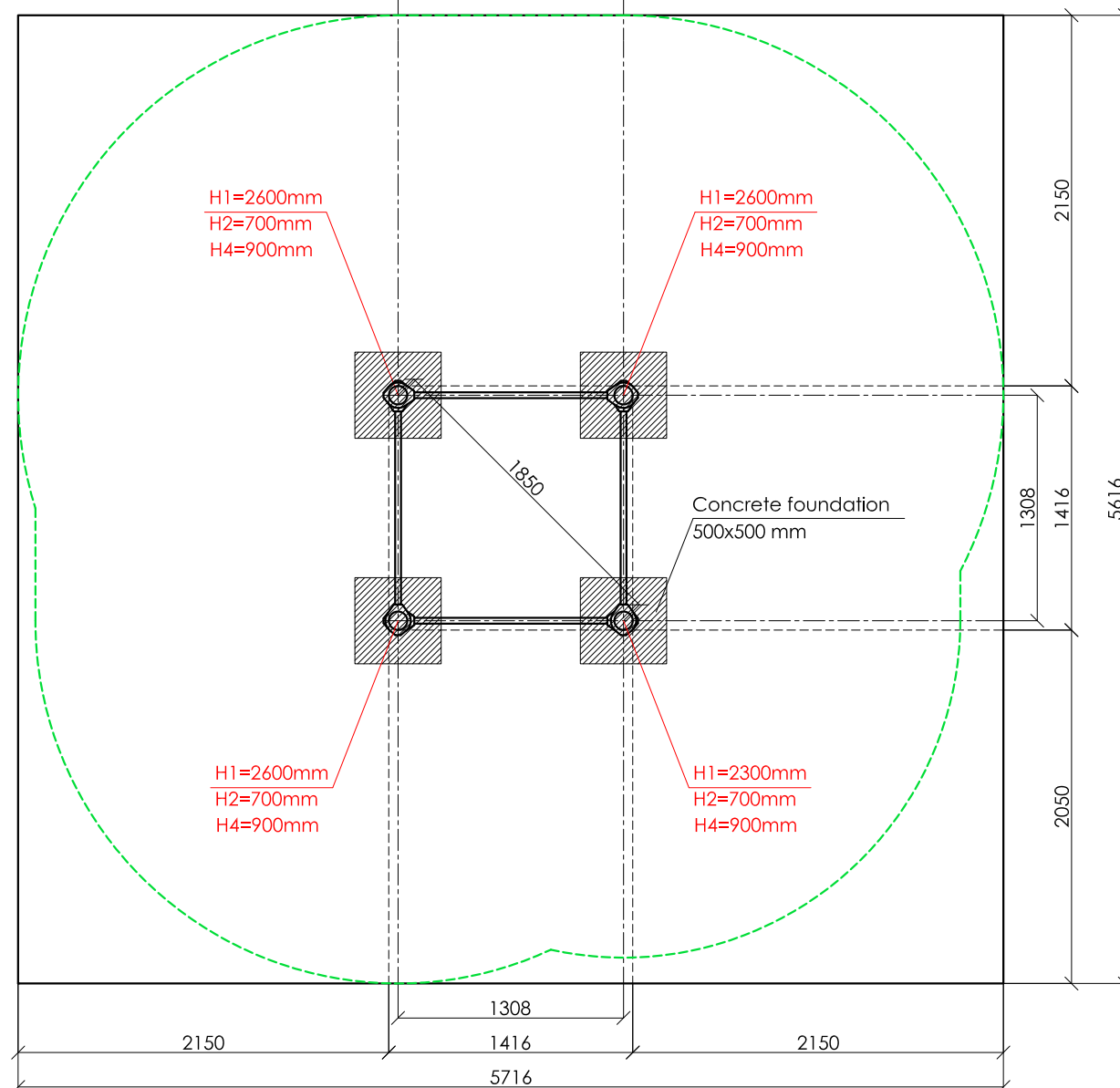
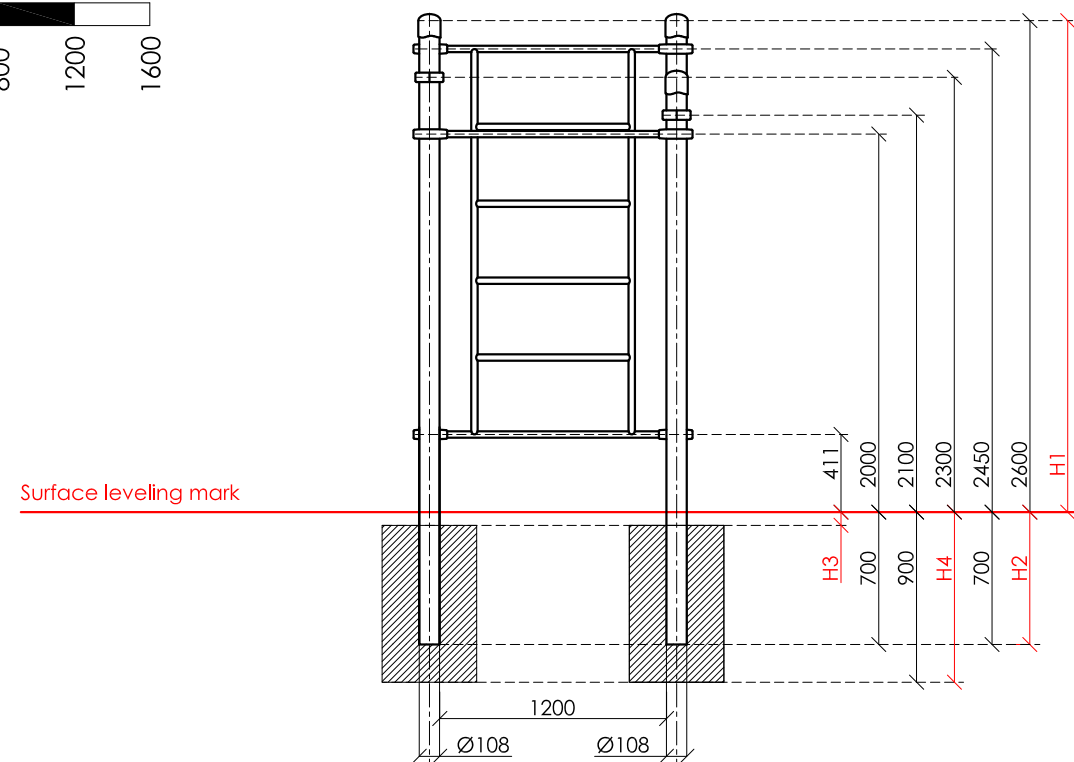
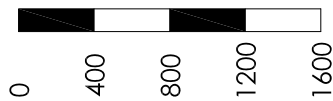


SCALE 1:40



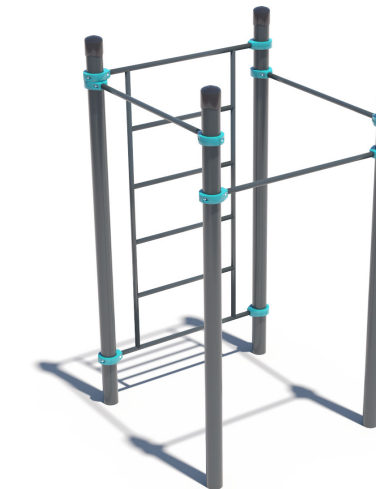
**KENGURU PRO**

"KENGURU PRO" LTD

Address: Lauteres street 4, Riga, Latvia, LV-1002  
 VAT Reg. No. 40103750152  
 Bank: A/S Luminor bank, SWIFT: RIKOLV2X,  
 Bank Account: LV65RIKO0002930161161  
 e-mail: info@kengurupro.eu  
 www.kengurupro.eu

K-024

Mini complex GTO



The complex consists of four vertical columns of different height, three crossbars 1200 mm in length and Swedish wall. Optionally, two 1200 mm crossbars can be re-designed to be 1758 mm in length. Height of the Swedish wall - 2073 mm, width - 1200 mm. The distance between the crossbars of the Swedish wall - 407 mm. Construction is secured together with siluminium clamps. Weight 180,5 kg.

**Installation instructions:**

- Choose a suitable underground for the unit (see page 2, table 2)!
- Prepare the construction pit with a drilling machine or other devices.
- Before pouring the concrete all structures elements must be leveled and fixed.
- Complex elements must be fixed and bolted together with metal clamps.
- Ready-made C25 concrete should be used.
- Crossbars installation height can be changed according to customer's wishes.
- Approximately 0,15m<sup>3</sup> concrete is needed for each spot foundation.
- Under the structures we recommend to install absorbing rubber cover.

The size of the hole for the foundation is depending on the consistency of the ground. The dimensions mentioned above are applicable for normal conditions with firm ground. If the ground is extremely soft, a much bigger foundation is needed. Use only appropriate material and follow the installation instructions closely!!!

**Foundation plan and area of movement of the K-024 Mini complex GTO**

Foundation plan and area of movement of the K-024 Mini complex GTO				Technical information				
Foundation when using Shock absorbing underground (synthetic – rubber granulates)		Beveling of foundation when using loose filling material		width:	1416 mm			
				height:	2650 mm			
				length:	1416 mm			
				largest part:	3350 mm			
				weight:	180,5 kg			
				floor space required: 5716 x 5616 mm				
				pipe measurements:	diameter:	108 mm	wall thickness:	3.2 mm
								3.2 mm
				metal parts: steel, galvanized, powder coated RAL 7016 (anthracite grey)				
				metal clamps: siluminium, powder coated, RAL 5018 (turquoise blue)				
				bolts for metal clamps: stainless steel, Pin Hex Button Head Security bolts M10				
				max. free fall height:		< 2450 mm		possible underground see DIN 79000:2012-05 Tab.2 or installation instructions
				user height:		> 140 cm		
				maximum user weight:		130 kg		
				certificates: TÜV Rheinland InterCert Kft.				

