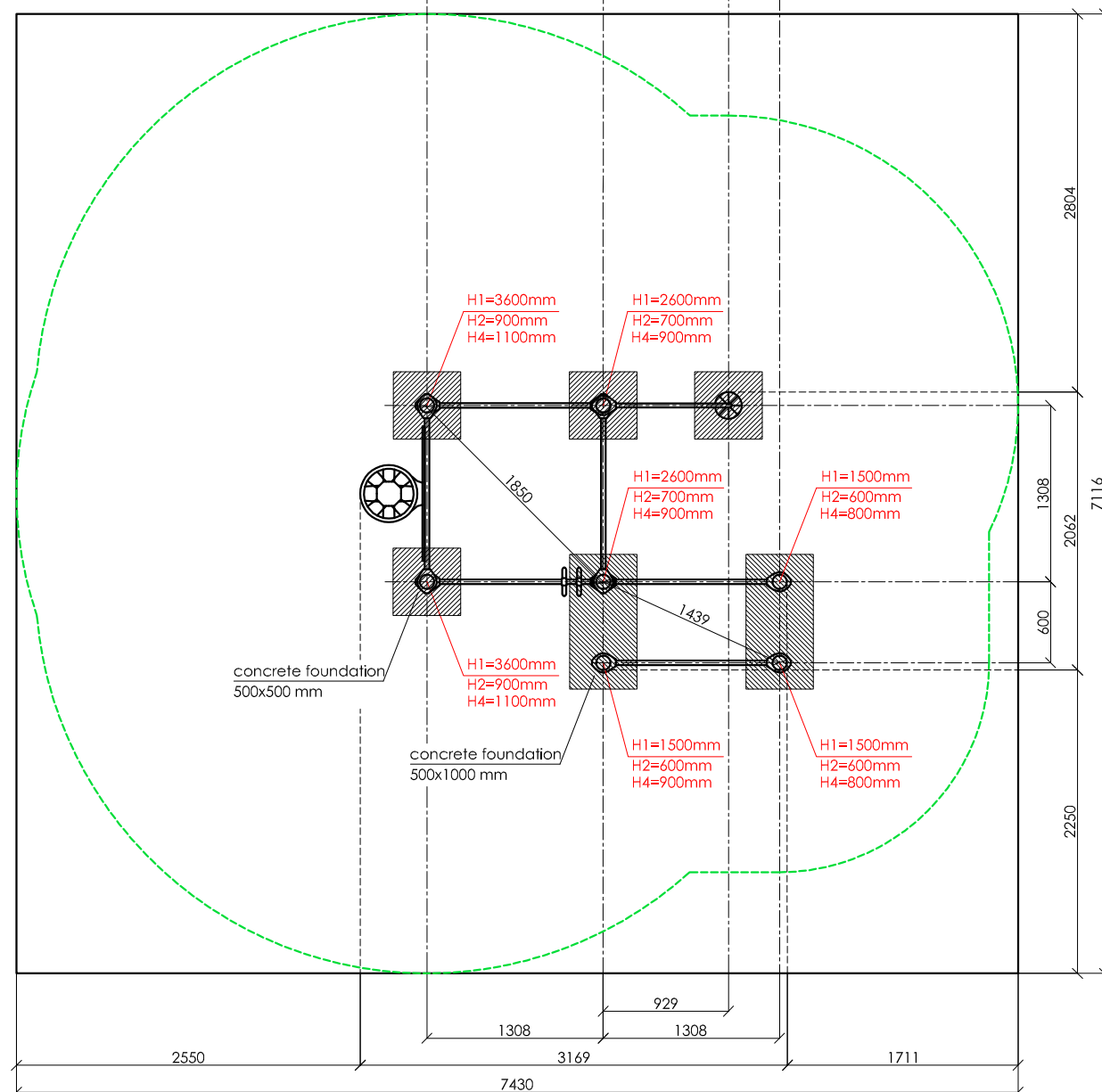
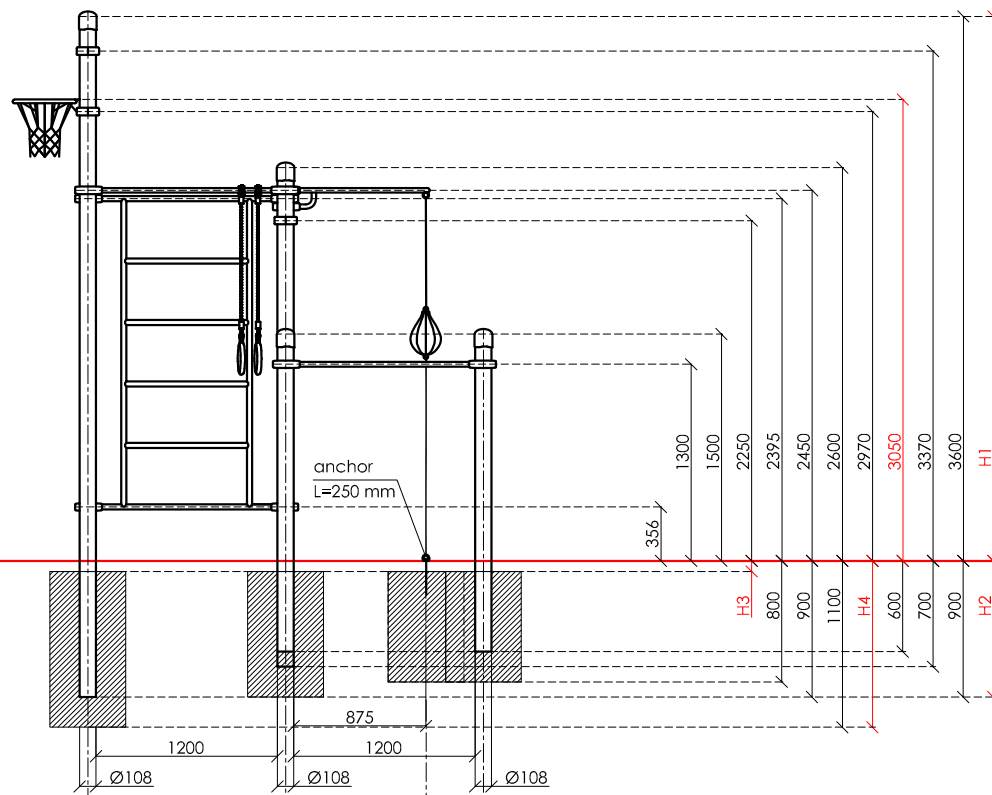
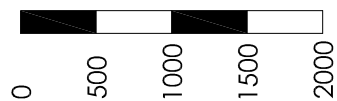


SCALE 1:50



**KENGURU  
PRO**

"KENGURU PRO" LTD

Address: Lauteres street 4, Riga, Latvia, LV-1002  
VAT Reg. No. 40103750152  
Bank: A/S Luminor bank, SWIFT: RIKOLV2X ,  
Bank Account: LV65RIKO0002930161161  
e-mail: info@kengurupro.eu  
www.kengurupro.eu

K-046

Multi-functional outdoor equipment



The outdoor complex includes seven vertical columns, two pull-up bars, a pair of parallel bars, a Swedish wall section, a basketball hoop on a high-pressure laminate (HPL) backboard, two gymnastics rings and a boxing speed bag. The structure is secured together with aluminium clamps.

Weight 300,0 kg

Installation instructions:

- Choose a suitable underground for the unit (see page 2, table 2)!
- Prepare the construction pit with a drilling machine or other devices.
- Before pouring the concrete all structures elements must be leveled and fixed.
- Complex elements must be fixed and bolted together with metal clamps.
- Ready-made C25 concrete should be used.
- Crossbars installation height can be changed according to customer's wishes.
- Approximately 0,15m<sup>3</sup> concrete is needed for each spot foundation.
- Under the structures we recommend to install absorbing rubber cover.

The size of the hole for the foundation is depending on the consistency of the ground. The dimensions mentioned above are applicable for normal conditions with firm ground. If the ground is extremely soft, a much bigger foundation is needed. Use only appropriate material and follow the installation instructions closely!!!

Foundation plan and area of movement of the K-046 Multi-functional outdoor equipment

Foundation when using Shock absorbing underground (synthetic - rubber granulates)		Beveling of foundation when using loose filling material		Technical information		
				width:	3168 mm	
				height:	2062 mm	
				length:	3650 mm	
				largest part:	4550 mm	
				weight:	300.0 kg	
				floor space required	7430 x 7116 mm	
				pipe measurements:	diameter:	
					108 mm	wall thickness:
					42.4 mm	3.2 mm
					33.7 mm	3.2 mm
				metal parts:	steel, galvanized, powder coated RAL 7016 (anthracite grey)	
				metal clamps:	siluminium, powder coated, RAL 5018 (turquoise blue)	
				bolts for metal clamps	stainless steel, Pin Hex Button Head Security Screws M10	
				max. free fall height:	< 3370 mm	possible underground see DIN 79000:2012-05 Tab.2 or installation instructions
				user height:	> 140 cm	
				maximum user weight:	130 kg	
				certificates:		

